



# Vicon PTZ Integration

## Supported Models

Tested: SN683D-WIR

*\*Other models likely work, but have not been tested*

## Power Requirements

**Power Requirements:** Input Voltage: UPoE (injector included);  
12 VDC  $\pm$ 10% **Current (IR On)** : 500 mA @ PoE; 2.3 A @ 12 VDC

**Power Consumption (IR On):** 28W

## User Name & Password

**Vicon Default user name and password:**

User Name	ADMIN
Password	1234

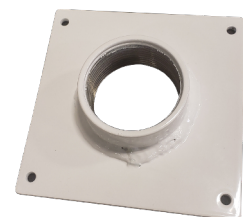
## Network Settings

**Vicon Default:**

IP Address	DHCP or 192.168.1.100
------------	-----------------------



Camera Mounting Plate



## Mounting Best Practices

Bolt the Vicon camera to the Thermal Radar Camera Mounting Plate using the included threaded washer on the PTZ. Run wires through the camera mounting plate/installation base and install onto the goose-neck or arm mount. Terminate wiring on the installation base, then install the PTZ onto base with provided hardware.

## For More Information...

For more information about the Vicon PTZ camera including Manuals, Firmware, and other Help Topics, please see the following link:

<https://www.vicon-security.com/documentation/network-cameras-documentation/#ptz-cameras-documentation>