



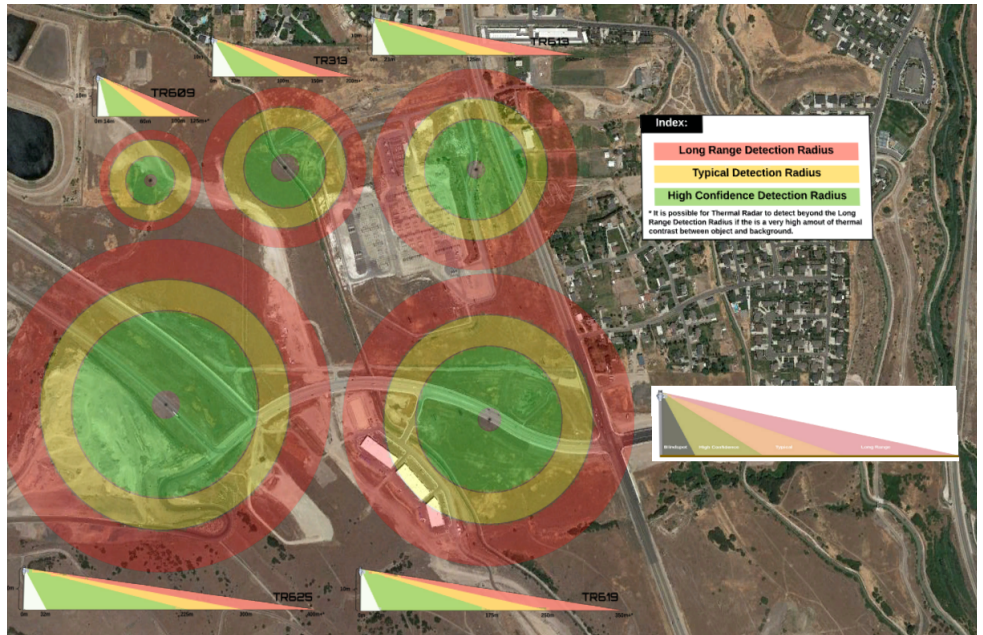
THERMALTM RADAR

Visionary Thermal Detection

**Creating Layouts with
Google Earth Pro**

Intro:

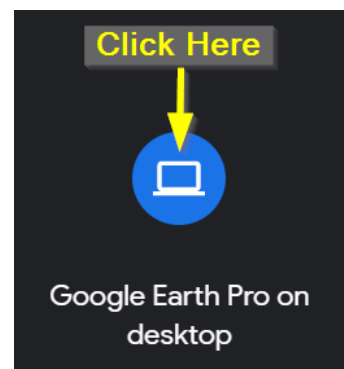
This guide shows you how to create, scale and save image overlays to create site layouts with Thermal Radar.



Step 1: Download and Install Google Earth Pro

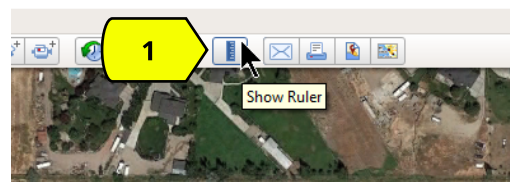
1. Follow the link below to download Google Earth Pro
<https://www.google.com/earth/versions/#earth-pro>
2. After download install Google Earth Pro
3. Open Google Earth Pro and navigate to desired position

Note: The non-pro version of Google Earth will not work for this guide because it does not have the circle ruler tool.

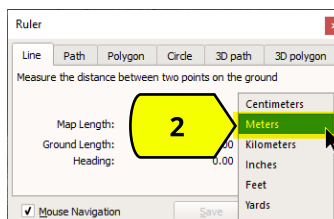


Step 2: Draw Measurement Circle for Scale Reference

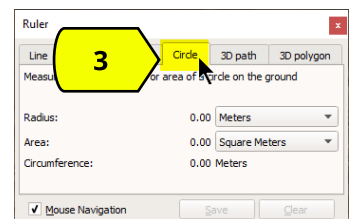
1. Select **Ruler** Tool



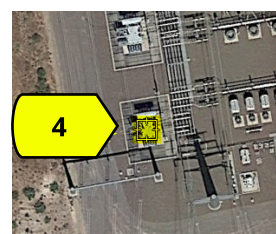
2. Change length measurement to **METERS**.



3. Select the **Circle** tab.



4. Left-Click on the center of the object to center the circle on.




5. Move mouse any direction to expand circle until the radius of the circle is exactly the length of the scale of the Thermal Radar image overlay you will be adding.

| Model: | Scale: |
|--------|------------|
| TR313 | 200 meters |
| TR609 | 125 meters |
| TR613 | 250 meters |
| TR619 | 350 meters |
| TR625 | 400 meters |

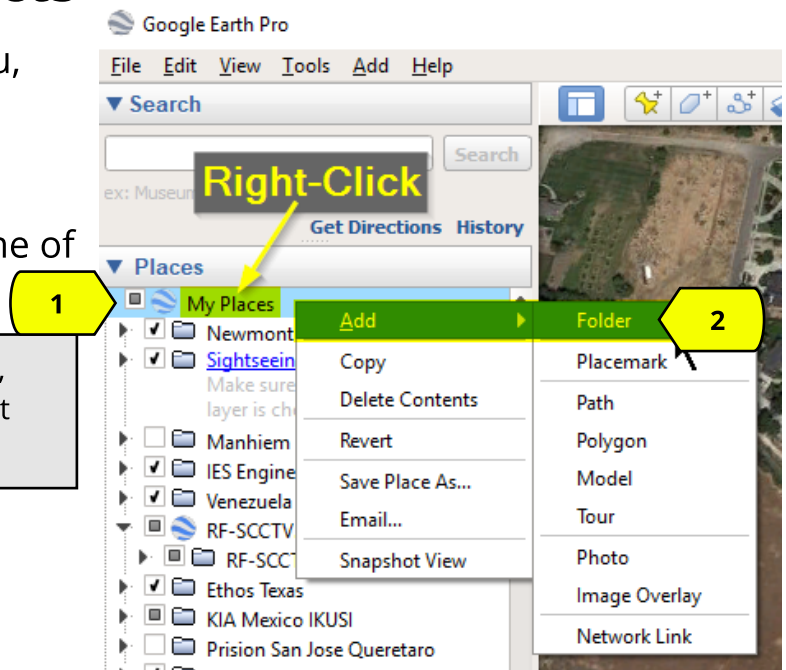


6. Left-Click again to finish drawing the circle.

Step 3: Create a Folder in Places Tree to Group Image Overlays and Other Objects

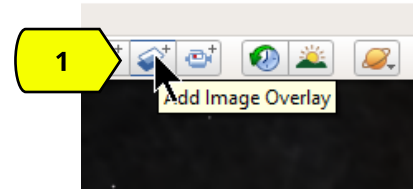
1. On the Places Tree in the left menu, right-click on  My Places
2. Select **Add > Folder**
3. Name the new folder with the name of the site you are laying out.

Note: When creating each new Image Overlay, make sure you have the folder selected so that they are automatically placed in the folder.



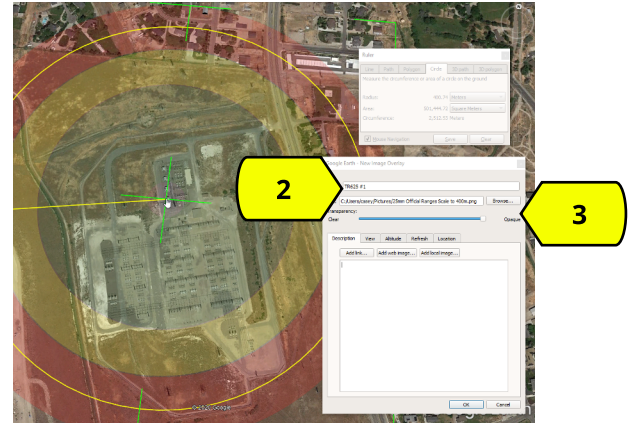
Step 4: Create and Scale an Image Overlay of the Thermal Radar Detection Range Image

1. Select **Add Image Overlay**  from the top menu.



2. Name the new overlay. (ex. TR625 #1)

3. Select the **Browse** button and select the image file for the Thermal Radar model you are laying out.



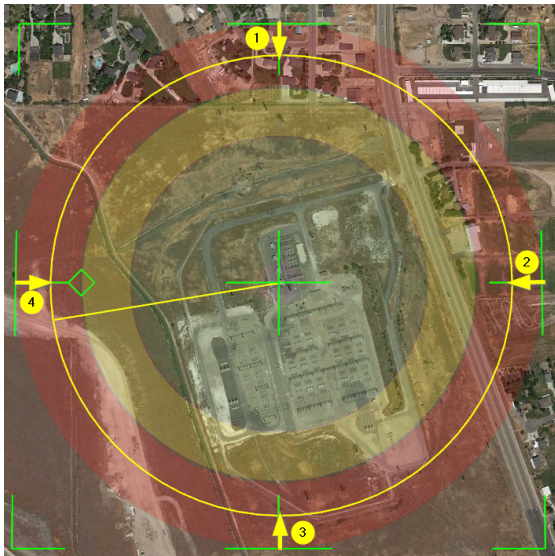
Note: When making changes to the image overlay, keep its Properties Window open. To re-open it, right-click on the image overlay in the My Places tree on the left menu.

4. Click and drag the new image overlay to the object you center your measurement circle on by clicking on the green cross-hairs in the center of the new image overlay.

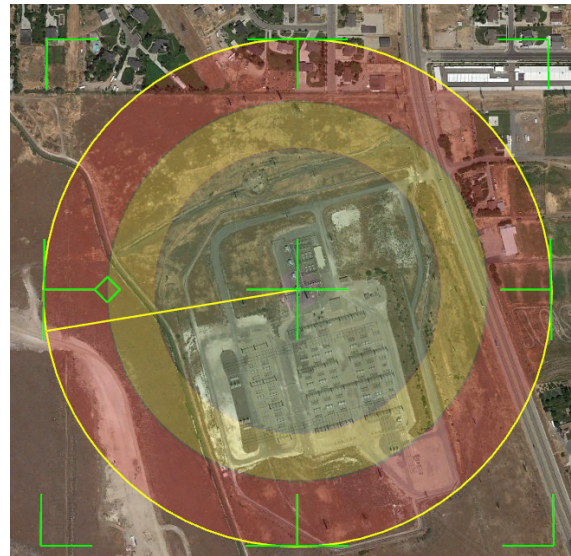


5. Click and drag each side of the image overlay until it the size of the measurement circle.

Before:

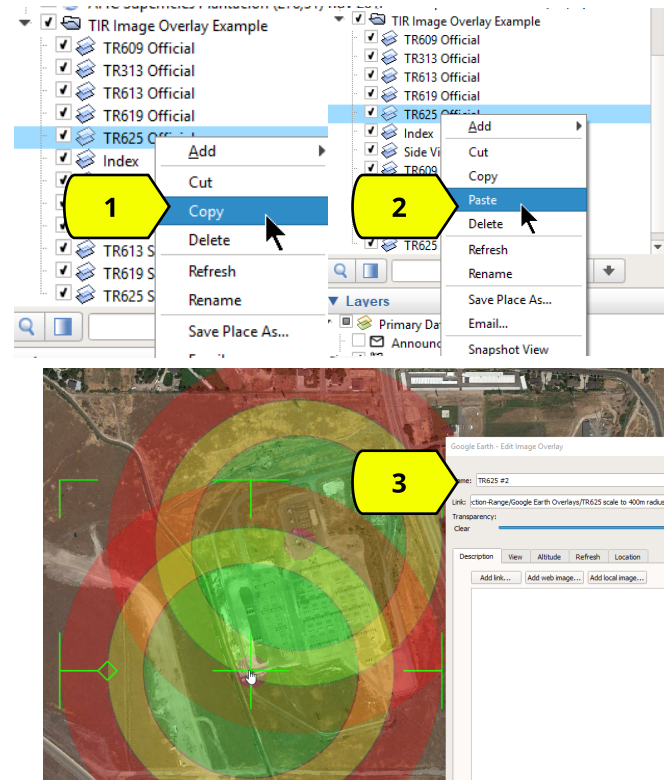


After



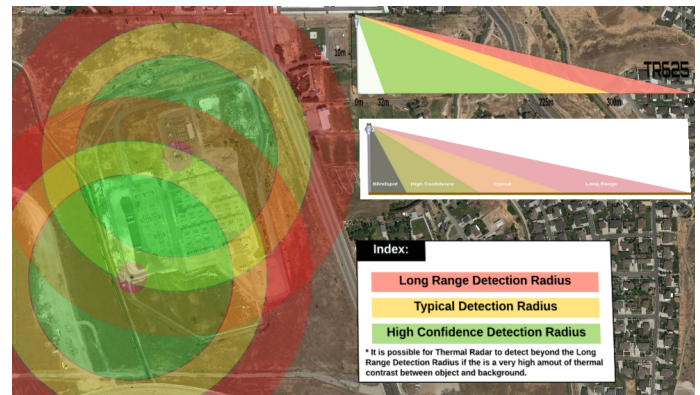
Step 5: Creating Copies Image Overlays for Sites with Multiple Thermal Radars.

1. To create a copy of the Image Overlay, right-click on the overlay in the left menu and select **Copy**.
2. After copying the overlay, right-click again anywhere under the desired folder and select **Paste** to create a new overlay.
3. To rename and move the overlay to a new position, right-click on it and select **Properties**.
4. Once the properties window is open, you can add new name and/or move the layer by clicking and dragging the overlay image from the center.



Step 6: Add Index and/or Side View Overlays

1. Follow the process above to add, scale and move the desired Index and Side View Overlay Images to the map to provide the customer with context of ranges and meaning of the colors.



Step 7: Save Overlays as a Google Earth .KMZ file

1. To save all the overlays created in a single file to send, right-click on the folder you created in the left menu, and select **Save Place As**.
2. Name the new .kmz file and save in the desired location.

