



Hanwha PTZ Integration

Supported Models

Tested: XNP-6370RH

**Other models likely to work, but have not been tested*

Power Requirements

Power Requirements:

Input Voltage: 24VAC

Power Consumption: Max. 60W/90W (Heater off/on, IR on)

User Name & Password

Hanwha Default user name and password:

User Name	admin
Password	<i>(new cameras force password change at first login)</i>

Network Settings

Hanwha Default:

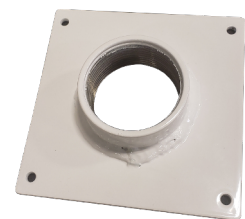
IP Address	DHCP or 192.168.1.100
------------	-----------------------



Mounting Best Practices

Install the Hanwha installation base onto the camera mounting plate.

Run wires through the camera mounting plate/installation base and install onto the goose-neck or arm mount. Terminate wiring on the installation base, then install the PTZ onto base with provided hardware.



Camera Mounting Plate

For More Information...

For more information about the Hanwha PTZ camera including Manuals, Firmware, and other Help Topics, please see the following link:

<https://www.hanwhasecurity.com/products/security-cameras/network-cameras/ptz-domes.html>