



Dahua PTZ Integration

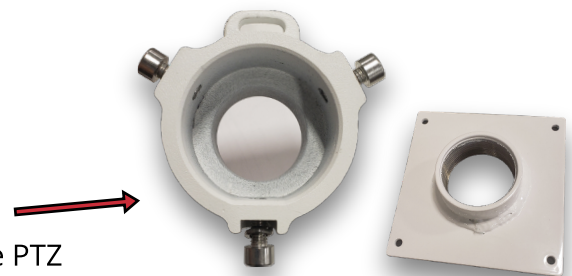
Supported Models	
* All network based Dahua PTZ cameras	
Power Requirements	
Power Requirements: 24 VAC, 3 A (± 25%); or Hi-PoE	
Power Consumption: 24 W; 38 W with IR on	
User Name & Password	
Dahua Default user name and password:	
User Name	admin
Password	admin
If the Dahua PTZ was supplied by Thermal	
User Name	admin
Password	Hydra360
Network Settings	
Dahua Defaults:	
IP Address	192.168.1.108 or DHCP
If supplied by Thermal Radar:	
IP Address	192.168.1.112



Mounting Best Practices

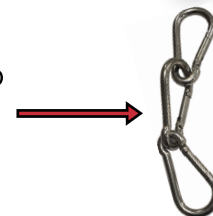
Correct install of 1-1/2 pipe adapter

When installing the Mount Adapter, ensure the flat edge of the adapter lines up with the flat edge on the PTZ



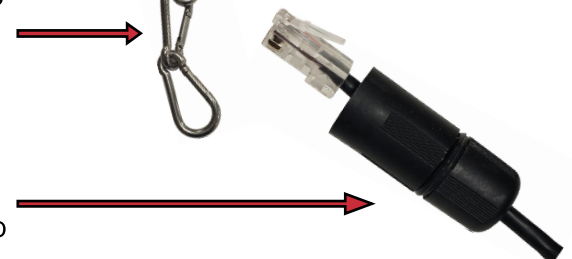
Installing safety clips

The Dahua PTZ comes with 3 safety clips that attach to the Mount Adapter and the PTZ. Use the safety clips to assist in the mounting of the PTZ



Weather Tight CAT-5/6 connector

Dahua PTZ's come with a weather tight CAT-5/6 connector. Ensure to install the weather tight connector to prevent water damage to the PTZ

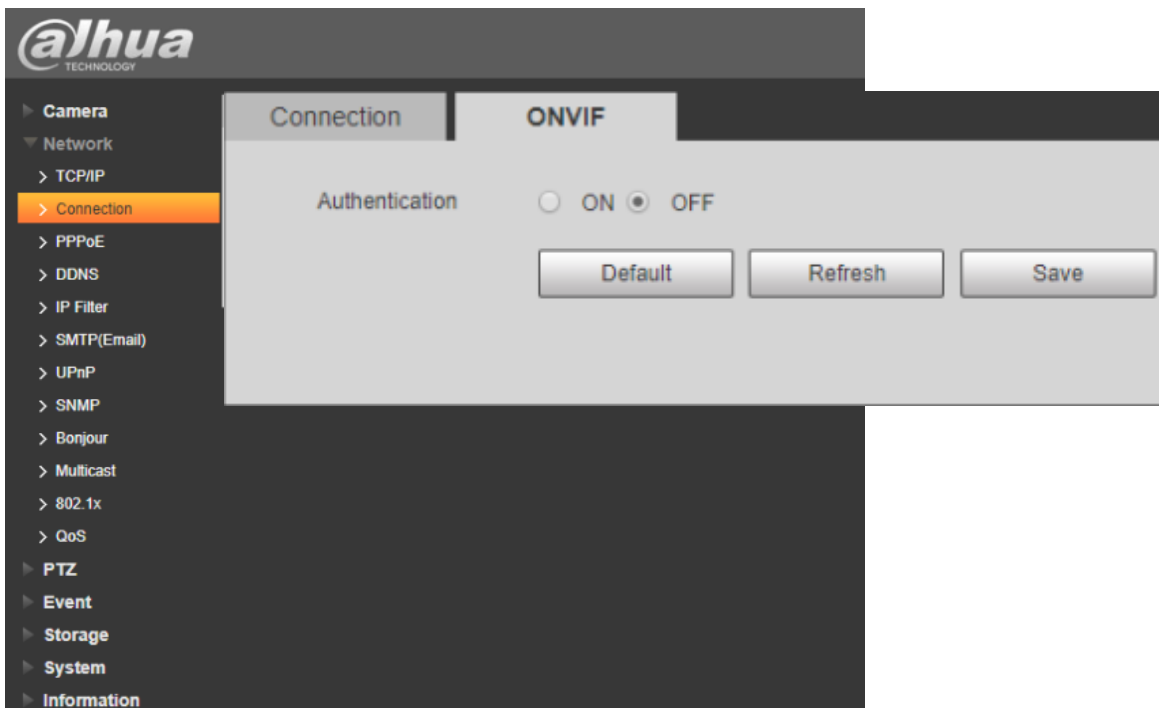


Special Considerations

Turn off ONVIF Authentication

For some VMS applications, it may be required to turn off ONVIF Authentication in order to get the Dahua PTZ to add into the VMS.

Setup>Network>Connection>ONVIF



For More Information...

For more information about the Dahua PTZ including Manuals, Firmware, and other Help Topics, please see the following link:

https://dahuawiki.com/Main_Page